



TOOLING & ACCESSORIES

PARTS CATALOG



- Arbors
- Collets
- Coiling Rings
- Custom Tooling
- Accessories



+1-800-933-0404 | sales@plattcoiler.com
5627 Airline Hwy, Fruitport, MI 49415
www.plattcoiler.com



SCAN TO SHOP ONLINE

TABLE OF CONTENTS

Tooling and Accessories	2
Accessories	2
Tooling	4
Coiling Rings	4
Grooved Rings	6
Collets	7
Custom Tooling	8
Filler Rings	10
Fine Wire Setup	11
High Expansion Setup	12
Tungsten Carbide Arbors	13

TOOLING AND ACCESSORIES

ACCESSORIES

**A-DEF: CUTTER DEFLECTOR, ARM, & MOUNT**

Deflector arm and mount used for larger wire coils.

**A-SPA: SPOOL ADAPTOR (SET)**

Spool adaptor (set).

**A-TDU: TRIPLE DEPAILER UNIT**

Triple depailer to replace standard depailer. Required to coil three wires from pail packs (special order).

**A-TSW: TRIPLE SOLUTION WHEEL**

Triple solution wheel used on solution bracket when coiling three wires (special order).

**BH-6015: SPINDLE WRENCH SET FOR BRUTE COILER**

Spindle wrench set for Brute Coiler (set of 2 different sizes).

**WCB-640: WORLD MODEL COILER SOLUTION TRAY**

Solution tray. World Model only.

**WCB-641: BRUTE COILER SOLUTION TRAY**

Solution tray. Brute Coiler only.

**WCS-515: SPINDLE WRENCH SET FOR WORLD MODEL 3000**

Spindle wrench set for World Model 3000 (set of 2 different sizes).



WCS-517: QUICK CHANGE COLLAR FOR DRIVE SLEEVES

Quick change collar for World Model 3000 replaces WCS-516 and WCS-503.

TOOLING

COILING RINGS



BCR-1: BACK UP RINGS FOR BRUTE COILER (PAIRS)

Steel flat rings. 1/8" face is used with all flat work rings (BCR-2). Sold in pairs.



BCR-2: STEEL FLAT WORK RINGS FOR BRUTE COILER (PAIRS)

Steel work rings for Brute Coiler (sold in pairs). This is the most common ring used in coiling. This ring is used for closed coiling and must be used with the [BCR-1 BACK UP RING](#).

Consult chart for sizing information.

Note that non-standard sizes are made to order.

Variations

Face Size	Gage	Description
Non-Standard (Custom Made)	Non-standard (custom made)	BCR2NS4: Custom-made steel flat work rings for non-standard sizes
1/4"	15-16	BCR-2-1516: 1/4" series steel flat work rings, 15-16 gage
1/4"	17-18	BCR-2-1718: 1/4" series steel flat work rings, 17-18 gage
1/4"	19-20	BCR-2-1920: 1/4" series steel flat work rings, 19-20 gage
3/8"	11-12	BCR-2-1112: 3/8" series steel flat work rings, 11-12 gage
3/8"	13-14	BCR-2-1314: 3/8" series steel flat work rings, 13-14 gage
1/2"	9-10	BCR-2-910: 1/2" series steel flat work rings, 9-10 gage



CRE-1: BACK UP RINGS FOR WORLD MODEL 3000 (PAIRS)

Steel flat rings. 1/8" face is used with all flat work rings (CRE-2). Sold in pairs.



CRE-2: STEEL FLAT WORK RINGS FOR WORLD MODEL 3000 (PAIRS)

Steel work rings for World Model 3000 (sold in pairs). This is the most common ring used in coiling. This ring is used for closed coiling and must be used with the [CRE-1 BACK UP RING](#).

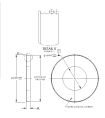
Consult chart for sizing information.

Note that non-standard sizes are made to order.

Variations

Face Size	Gage	Description
1/8"	21-22	CRE22122: 1/8" series steel flat work rings, 21-22 gage
1/8"	23-24	CRE22324: 1/8" series steel flat work rings, 23-24 gage
1/8"	25-26	CRE22526: 1/8" series steel flat work rings, 25-26 gage
1/8"	27-28	CRE22728: 1/8" series steel flat work rings, 27-28 gage
1/8"	29-30	CRE22930: 1/8" series steel flat work rings, 29-30 gage
1/4"	13-14	CRE21314: 1/4" series steel flat work rings, 13-14 gage
1/4"	15-16	CRE21516: 1/4" series steel flat work rings, 15-16 gage
1/4"	17-18	CRE21718: 1/4" series steel flat work rings, 17-18 gage
1/4"	19-20	CRE21920: 1/4" series steel flat work rings, 19-20 gage
Non-Standard (Custom Made)	Non-Standard (Custom Made)	CRE2NS4: Custom made, non-standard steel flat work rings

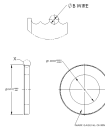
GROOVED RINGS



BCR-5: GROOVED INTEGRAL CLOSE WOUND RINGS FOR BRUTE COILER

Grooved integral close wound coiling rings. Sizes compatible with Brute Coiler.

Please select size: 8 Gage - 20 Gage.



CRE-5: GROOVED INTEGRAL CLOSE WOUND RINGS FOR WORLD MODEL 3000

Grooved integral close wound coiling rings. Sizes compatible with World Model 3000.

Please select size: 15 gage - 28 gage. Gages 15-20 are available in half steps. 20-28 in whole gages only.

COLLETS



COLLETS: 100, 200 & 300 SERIES

Collets for spindle. 100 series is compatible with Brute Coiler. 200 series is for the World Model 3000 and the 300 series is compatible with some mini-matic coilers.

Please specify series and inner-diameter hole size based on these guidelines:

100 Series: 1/16 to 9/16 in. 200 Series: 3/64 to 3/8 in. 300 Series: 3/64 to 1/4 in.

Variations

Series	Description
100	C1: 100 Series Collet
200	C2: 200 Series Collet
300	C3: 300 Series Collet

CUSTOM TOOLING



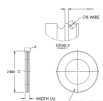
A-BTP1: STEP ARBOR FOR BRUTE COILER (EACH)

Step arbor for Brute Coiler (each). Please specify size, between .563 in. and 1 in., in increments of .001 in.



A-STP1: STEP ARBOR FOR WORLD MODEL 3000 (EACH)

Step arbor for World Model 3000 only (Sold Individual). Please specify size, between .375 in. and .875 in., in increments of .001 in.



BCR-5S: GROOVED INTEGRAL SPACE WOUND RINGS FOR BRUTE COILER

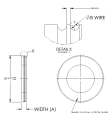
Custom made grooved integral space wound coiling rings, single or twin. Sizes compatible with Brute Coiler.

Please select ring width, from 1/4" to 1", and gage, from 8 to 20. Please also specify groove spacing and number of grooves (default is 3).

Inventory note (internal):

Part numbers follow this format: BCR-5S-W-G. W= Ring Width (A=3/8, B=1/4, C=1/2, D= 5/8, E=3/4, F=1). G=Wire Gage

Example: BCR-5S-A-8 is a 3/8", 8-gage ring



CRE-5S: GROOVED INTEGRAL SPACE WOUND RINGS FOR WORLD MODEL 3000

Custom made grooved integral space wound coiling rings, single or twin. Sizes compatible with World Model 3000.

Please select ring width, from 1/4" to 1", and gage, from 15 to 28. Please also specify groove spacing and number of grooves (default is 3).

Inventory note (internal):

Part numbers follow this format: CRE-5S-W-G. W= Ring Width (A=3/8, B=1/4, C=1/2, D= 5/8, E=3/4, F=1). G=Wire Gage

Example: CRE-5S-A-15 is a 3/8", 15-gage ring



NCA: FINE WIRE NOSE CONE ARBOR

Custom-made nose cone arbors for fine wire coiling.

Please specify arbor size: .032" to .250", in increments of .001"



RCR-2: RIBBON FLAT WIRE - SPECIAL ORDER

Special order. Work ring used to coil flat wire.



SRR-1: RIBBON WIRE SPACER RING - SPECIAL ORDER

Ribbon Wire Spacer ring. Special order.

FILLER RINGS



FLR-7: FILLER RINGS

Filler rings by width. Please choose your width from the list.

Variations

Width	Description
1/4"	FLR7-1/4: 1/4" filler ring flr7-1/4
3/8"	FLR7-3/8: 3/8" filler ring flr7-3/8
1/2"	FLR7-1/2: 1/2" filler ring flr7-1/2
5/8"	FLR7-5/8: 5/8" filler ring flr7-5/8
3/4"	FLR7-3/4: 3/4" filler ring flr7-3/4
7/8"	FLR7-7/8: 7/8" filler ring flr7-7/8

FINE WIRE SETUP



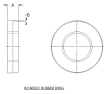
CRE-1BA: FINE WIRE FEED BACK UP RING (1 ONLY)

Fine wire feed back up ring (1 only). Used with rubber rings.



CRE-2CB: FINE WIRE FEED WORK RING (1 ONLY)

Fine wire feed work ring (1 only). Used with nose cone arbor (1 only).



CRE-3: BONDED RUBBER RINGS

Bonded rubber rings: various widths and grind types (angles). Please select your desired size and grind from the list.

Variations

Width	Grind Type (Angle)	Description
1/2"	Flat	CRE-35F: Bonded rubber ring: 1/2" flat cre-35f
1/2"	3 Degrees	CRE-353: Bonded rubber ring: 1/2" 3 degrees cre-353
1/2"	6 Degrees	CRE-356: Bonded rubber ring: 1/2" 6 degrees cre-356
5/8"	Flat	CRE-36F: Bonded rubber ring: 5/8" flat cre-36f
5/8"	3 Degrees	CRE-363: Bonded rubber ring: 5/8" 3 degrees cre-363
5/8"	6 Degrees	CRE-366: Bonded rubber ring: 5/8" 6 degrees cre-366
1"	Flat	CRE-37F: Bonded rubber ring: 1" flat cre-37f
1"	3 Degrees	CRE-373: Bonded rubber ring: 1" 3 degrees cre-373
1"	6 Degrees	CRE-376: Bonded rubber ring: 1" 6 degrees cre-376

HIGH EXPANSION SETUP



CRE-1B2: FINE WIRE FEED BACK UP NOSE CONE RING

Fine wire nose cone backup ring. Used with nose cone arbor (1 only).



CRE-2C2: FINE WIRE NOSE CONE COILING WORK RING

Fine wire nose cone coiling work ring.



CRE-3A: NOSE CONE RUBBER RING

Bonded rubber ring ground with a 45 degree angle for use with high-expansion tooling.



NCA: FINE WIRE NOSE CONE ARBOR

Custom-made nose cone arbors for fine wire coiling.

Please specify arbor size: .032" to .250", in increments of .001"

TUNGSTEN CARBIDE ARBORS



TCA: TUNGSTEN CARBIDE ARBORS (SELECT SIZE)

Tungsten-carbide arbors for shaping coils. Select size below.

Length: 6" or 12".

Outer Diameter: .025"-.563" in increments of .001".

Variations

Length	Description
6" length	6" tungsten-carbide arbor
12" length	12" tungsten-carbide arbor

INDEX

- A**
- A-BTP1: Step Arbor for Brute Coiler (Each) 8
 - A-DEF: Cutter Deflector, Arm, & Mount 2
 - A-SPA: Spool Adaptor (Set) 2
 - A-STP1: Step Arbor for World Model 3000 (Each) 8
 - A-TDU: Triple Depailer Unit 2
 - A-TSW: Triple Solution Wheel 2
- B**
- BCR-1: Back Up Rings for Brute Coiler (Pairs) 4
 - BCR-2: Steel Flat Work Rings for Brute Coiler (Pairs) 4
 - BCR-5: Grooved Integral Close Wound Rings for Brute Coiler 6
 - BCR-5S: Grooved Integral Space Wound Rings for Brute Coiler 8
 - BH-6015: Spindle Wrench Set for Brute Coiler 2
- C**
- Collets: 100, 200 & 300 Series 7
 - CRE-1: Back Up Rings for World Model 3000 (Pairs) 4
 - CRE-1B2: Fine Wire Feed Back Up Nose Cone Ring 12
 - CRE-1BA: Fine Wire Feed Back Up Ring (1 Only) 11
 - CRE-2: Steel Flat Work Rings for World Model 3000 (Pairs) 4
 - CRE-2C2: Fine Wire Nose Cone Coiling Work Ring 12
 - CRE-2CB: Fine Wire Feed Work Ring (1 Only) 11
 - CRE-3: Bonded Rubber Rings 11
 - CRE-3A: Nose Cone Rubber Ring 12
 - CRE-5: Grooved Integral Close Wound Rings for World Model 3000 6
 - CRE-5S: Grooved Integral Space Wound Rings for World Model 3000 8
- F**
- FLR-7: Filler Rings 10
- N**
- NCA: Fine Wire Nose Cone Arbor 8, 12
- R**
- RCR-2: Ribbon Flat Wire - Special Order 8
- S**
- SRR-1: Ribbon Wire Spacer Ring - Special Order 8
- T**
- TCA: Tungsten Carbide Arbors (Select Size) 13
- W**
- WCB-640: World Model Coiler Solution Tray 2
 - WCB-641: Brute Coiler Solution Tray 2
 - WCS-515: Spindle Wrench Set for World Model 3000 2
 - WCS-517: Quick Change Collar for Drive Sleeves 3

CONTACT US

+1-800-933-0404

sales@plattcoiler.com

www.plattcoiler.com

PLATT
COILER

The Leader in the
Electric Coil Heating Industry
Since 1953



SCAN TO SHOP ONLINE

